

The book cover features a complex marbled paper pattern with swirling, organic shapes in shades of green, yellow, and pink. A central rectangular area is framed by a black Greek key border. The text within this frame is printed in a classic serif font.

**MODERN COSTUME.**

*Drawn and Engraved*

BY

**HENRY MOSES, ESQ.**

*THIRTY PLATES.*

PRICE TWO GUINEAS.



Digitized by the Internet Archive  
in 2016

<https://archive.org/details/seriesoftwentyni00mose>















A SERIES  
OF  
TWENTY-NINE DESIGNS  
OF  
**MODERN COSTUME,**

DRAWN AND ENGRAVED

BY

*HENRY MOSES, Esq.*



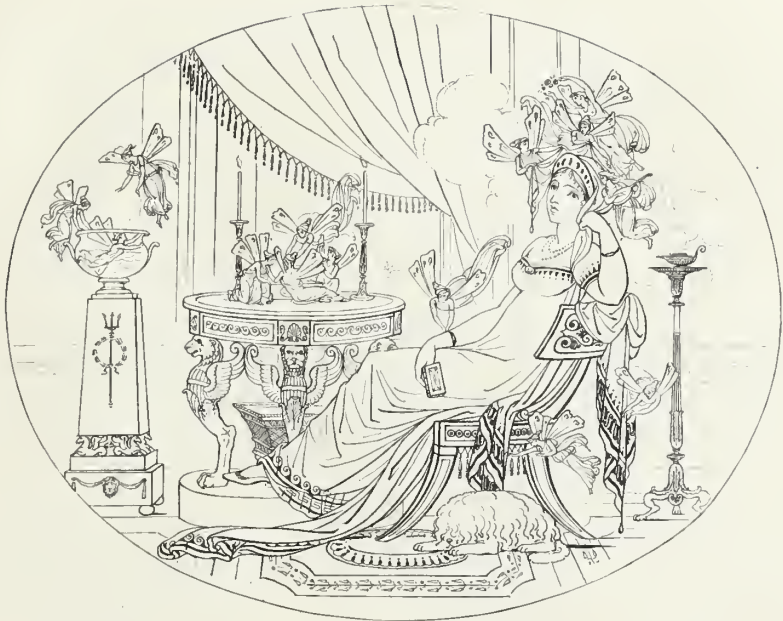
LONDON:

Moses del et sculp.

PUBLISHED BY E. and C. M'LEAN,  
REGENT STREET, PALL MALL.

1823.



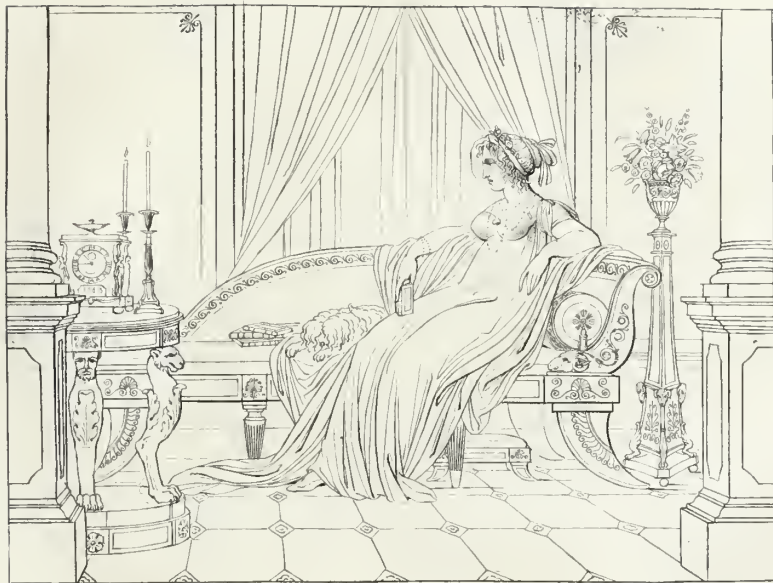


*H. Moore del et sculp.*

BELINDA.

*Vide Pope's Rape of the Lock.*





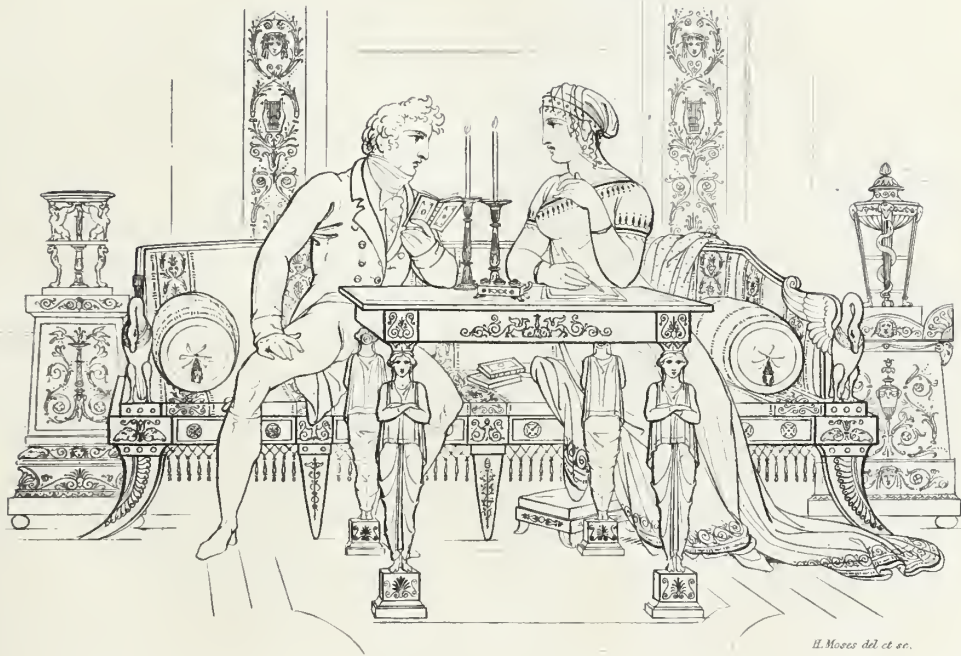
*Museo del re Ferdinando*











*Il. Moses del et sc.*





*Il Museo del 18. sc.*









*H. Moore del et sc.*







*H. Mosco del ca. 500.*





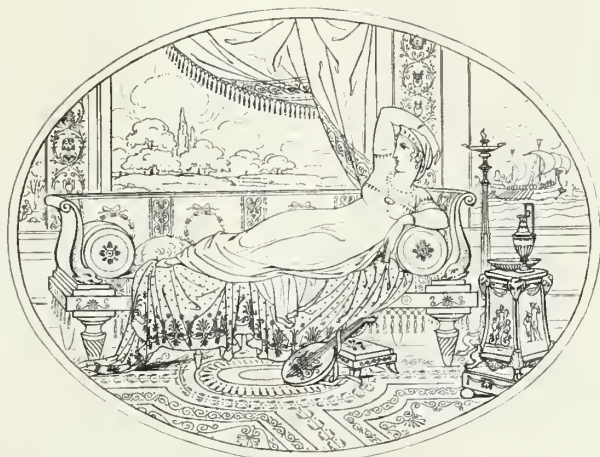
*H. Mayer del. et sc.*

SOPHIA.

*From every Page that boasts a Name,  
She calls the opening Flower.*

*And reigns alone the Queen of Love,  
Unconscious of her Power.*





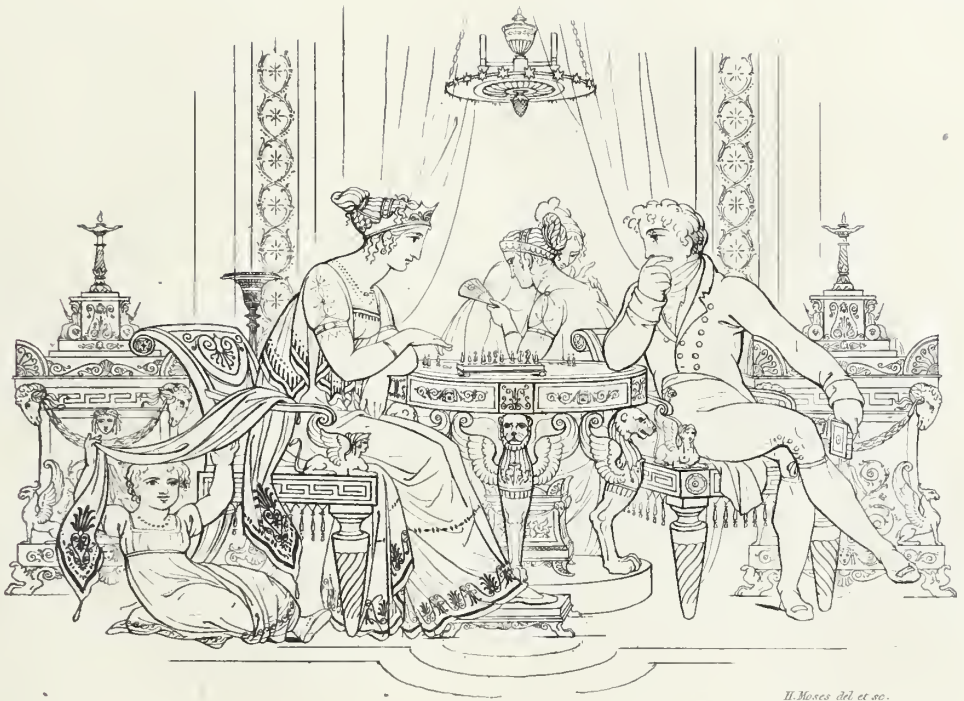
*W. Boscawen del et sc.*

S O P H I A .

*And long Sophia mayest thou reign,  
Unrivall'd to the End,*

*Be best in all thy soul holds dear,  
And all that Heaven can send.*

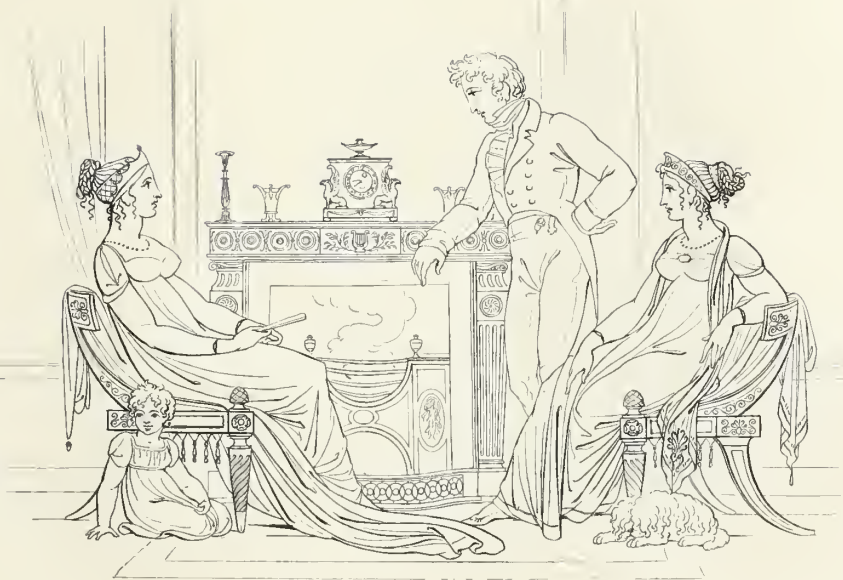




*Il. Moyses del ec. sc.*











*H. Mosse del. et sculp.*

PAN AND SYRINX.





*21. Museo del et. sculp.*

ECHO AND NARCISSUS.





*Museo del Pireo*







*El Momento del esculp.*

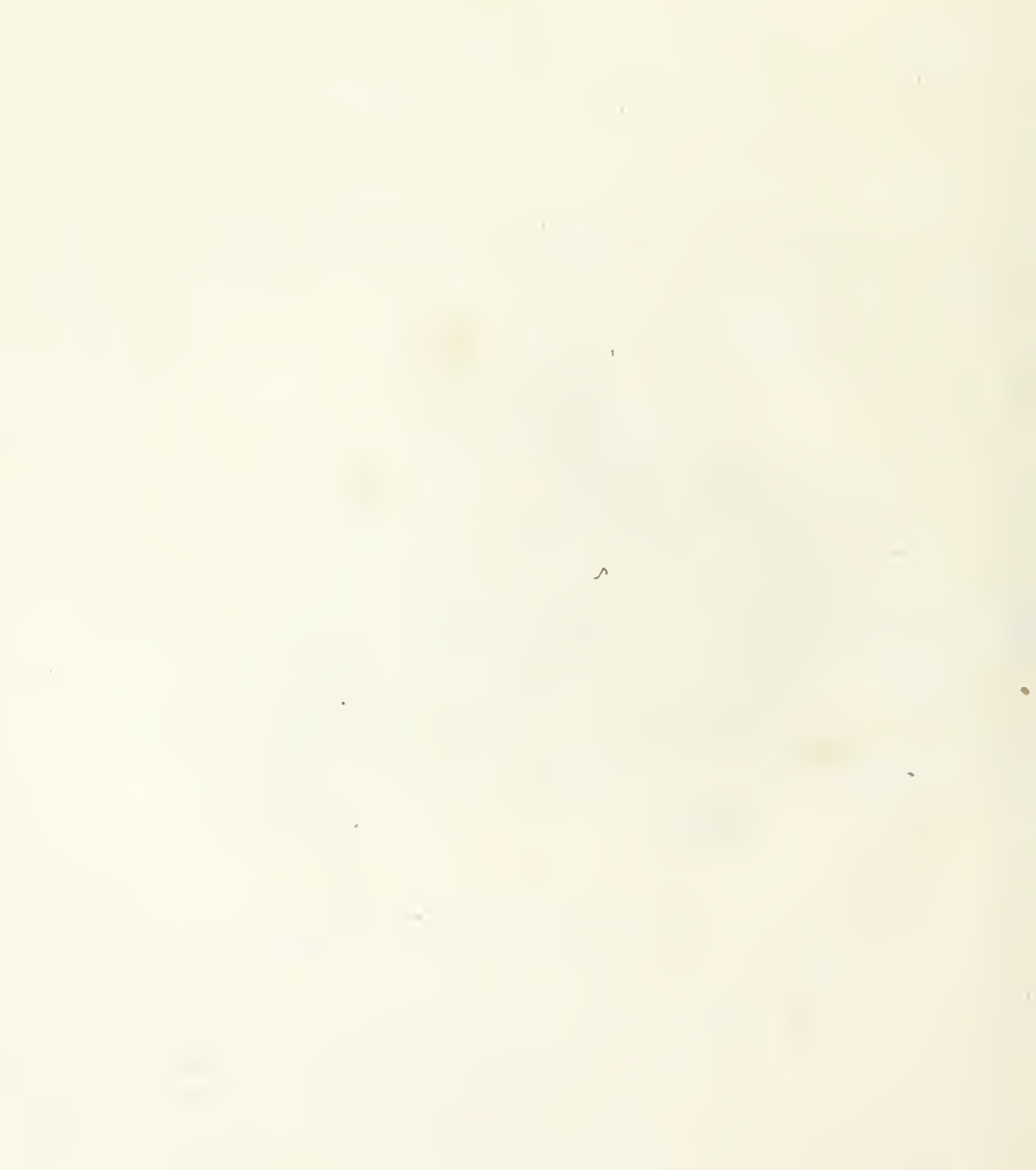


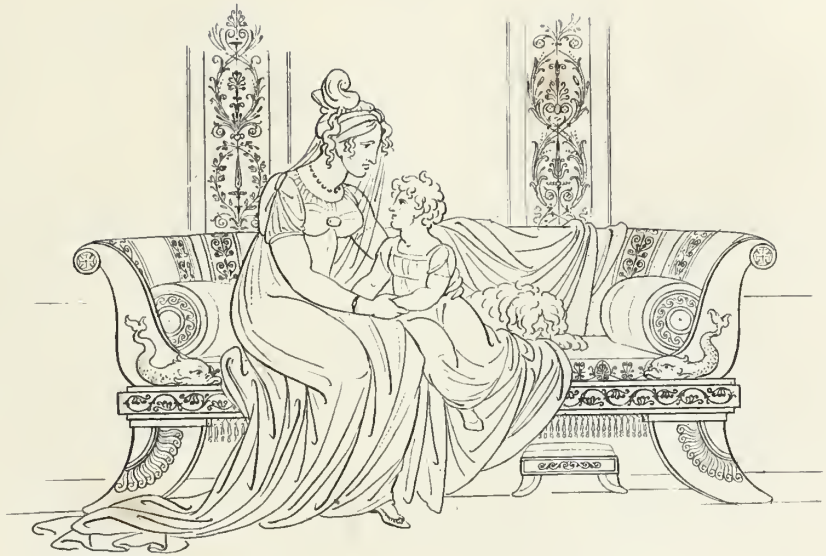






H. Mosca del. et sc.











*Il Moses del et. sc.*





PERICLES.









*Museo del Palazzo.*







M. de la C.









*Museo del ...*





*Il Mosco, del. et sc.*

























